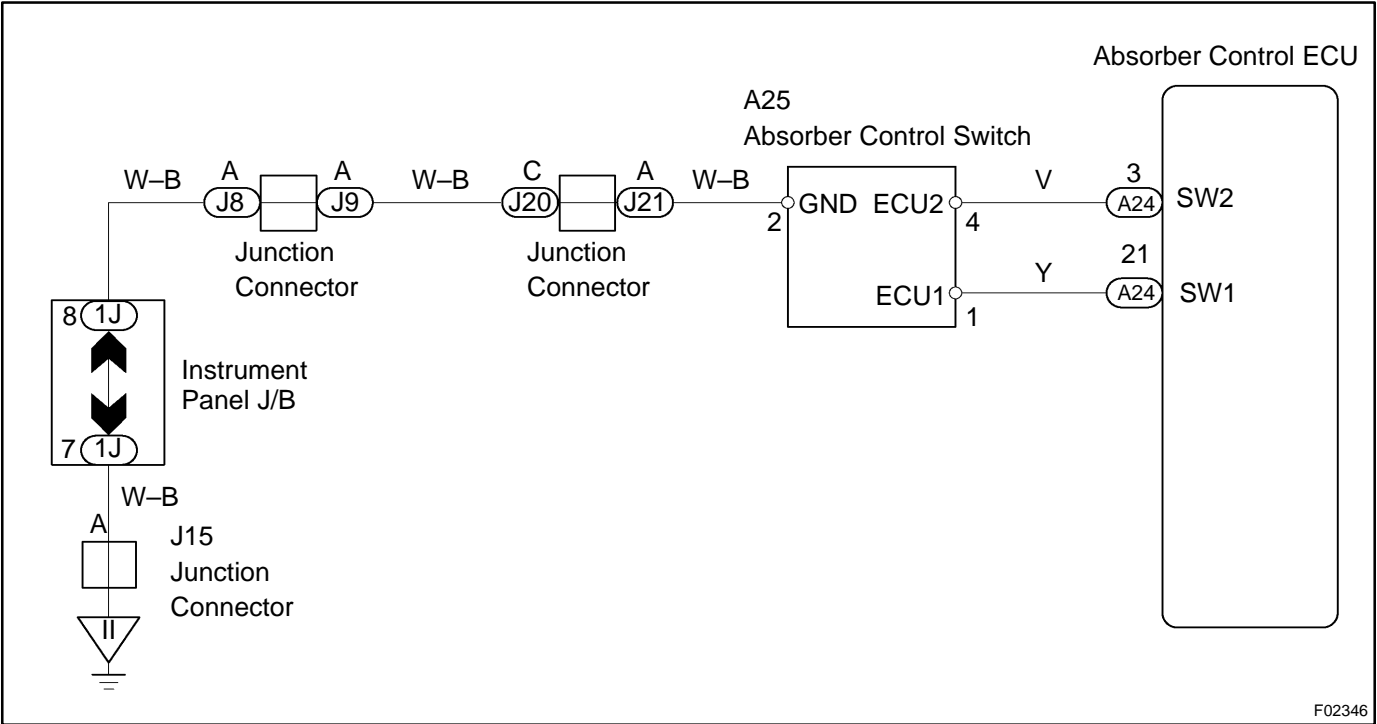


<b>DTC</b>	<b>52</b>	<b>Absorber Control Switch Circuit</b>
------------	-----------	----------------------------------------

# CIRCUIT DESCRIPTION

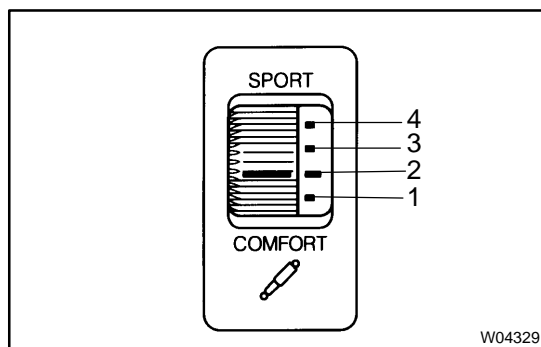
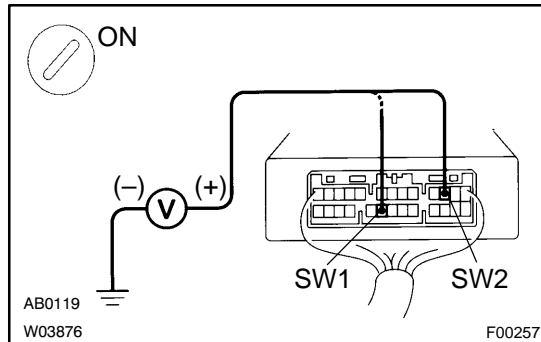
DTC No.	DTC Detecting Condition	Trouble Area
52	SW1 and SW2 of absorber control switch signals do not change.	<ul style="list-style-type: none"> <li>●Absorber control switch</li> <li>●Open or short circuit in between absorber control switch and absorber control ECU</li> <li>●Absorber control ECU</li> </ul>

# WIRING DIAGRAM



## INSPECTION PROCEDURE

## 1 Check operation of stop light.

**PREPARATION:**

- Remove the No. 1 lower panel (See page [BO-82](#)).
- Using SST, connect terminals Ts and E1 of the DLC1.  
SST 09843-18020
- Turn the ignition switch ON.

**CHECK:**

Measure the voltage between terminals SW1 and SW2 of the absorber control ECU connector and the body ground when move slowly moving the absorber control switch "COMFORT" ↔ "SPORT" both ways one.

**OK:****SW1:**

Absorber control switch 4	8 V or more
Absorber control switch 1	Below 1.5 V

**SW2:**

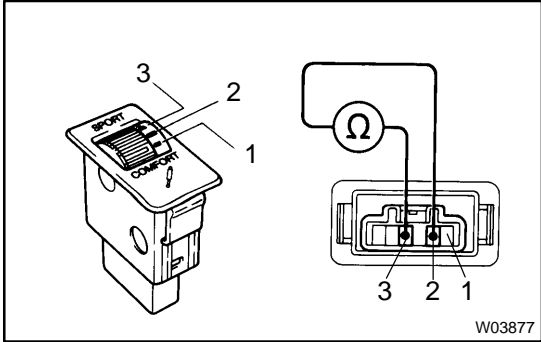
Absorber control switch 1	8 V or more
Absorber control switch 2	Below 1.5 V

OK

Proceed to next circuit inspection shown on problem symptoms table (See page [DI-224](#)).

NG

## 2 Check absorber control switch.



### PREPARATION:

- (a) Remove the upper control panel (See page [BO-82](#)).
- (b) Disconnect the absorber control switch connector.

### CHECK:

Check the continuity between each terminal of the absorber control switch at each switch position.

### OK:

#### Absorber control switch 3:

Terminals 2 and 3	Continuity
-------------------	------------

#### Absorber control switch 2:

Terminals 1 and 2	Continuity
Terminals 2 and 3	Continuity

#### Absorber control switch 1:

Terminals 1 and 2	Continuity
-------------------	------------

NG

Replace absorber control switch.

OK

## 3 Check harness and connectors between absorber control ECU and absorber control switch and body ground (See page [IN-31](#)).

NG

Repair or replace harness or connector.

OK

Check and replace absorber control ECU.